

Name: _____ Date: _____
 Class: _____

1 Date: _____

Draw the next stage in the ostrich life cycle.

Students should draw ostrich eggs similar to those shown in the first image of the ostrich life cycle.

2 Date: _____

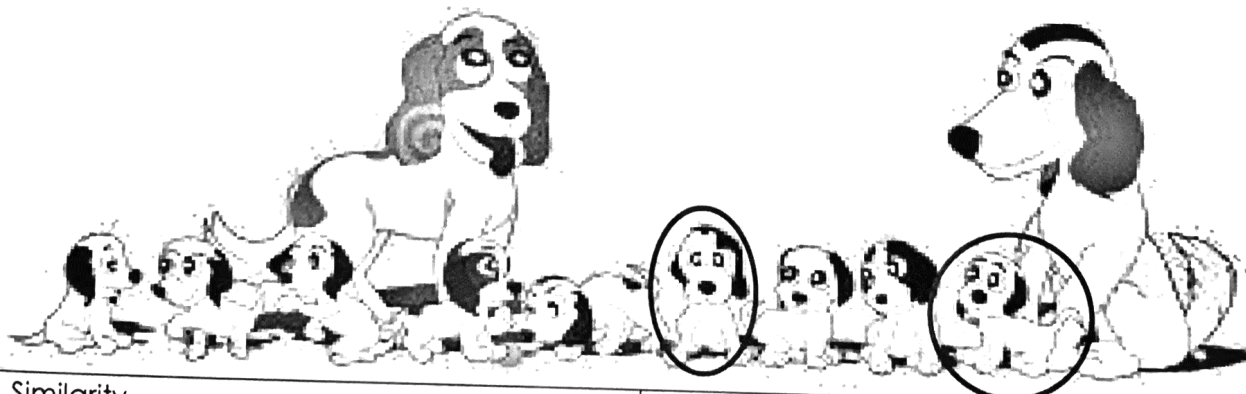
Why does this young koala look similar to its mother?

Sample answer: The mother passed on features to her offspring when she reproduced.

3 Date: _____

Comparing Puppies

Circle two puppies. Compare their similarities and differences.



Similarity	Difference
Both have black ears	One has white fur around his eyes and the other has black fur around the eyes

4

Date:

How is the life cycle of a frog different from the life cycle of an ostrich?

The young ostrich looks like a smaller version of the adult. The young frog is a tadpole, and it looks very different from an adult frog.

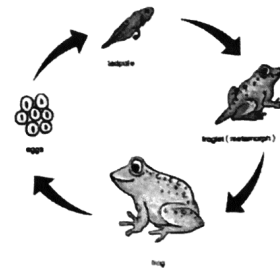
Name: _____
 Date: _____ Class: MODEL ANSWER

A) Choose the correct answer then fill in the corresponding bubble:

- 1) (A) (B) (C) (D)
 2) (A) (B) (C) (D)
 3) (A) (B) (C) (D)
 4) (A) (B) (C) (D)
 5) (A) (B) (C) (D)

1 Which of these is **true** about the life cycle of all animals?

- A. They have a mate.
 B. They produce young.
 C. They hatch from eggs.
 D. They have two parents.



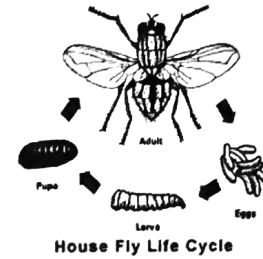
2 What makes every living thing unique?

- A. diversity
 B. family
 C. offspring
 D. parents



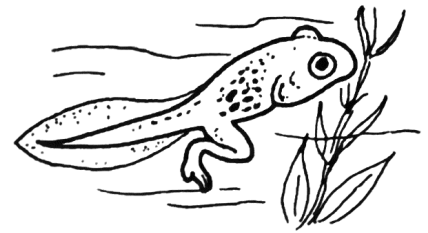
3 A fly has four stages that all look different in its life cycle. Which of these describes what happens in the life cycle of a fly?

- A. complete development
- B. incomplete development
- C. complete metamorphosis
- D. incomplete metamorphosis



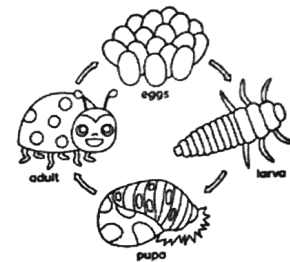
4 Which part of this tadpole lets you know that the tadpole is becoming a frog?

- A. its tail
- B. its legs
- C. its eyes
- D. its mouth



5 Which of these is the name of the young animal that hatches from a ladybug's egg?

- A. a foal
- B. a larva
- C. a nymph
- D. a tadpole



B. Match each term in column B with its meaning in column A.

Column A **Column B**

B 1 A phase in the life cycle of many animals during which they undergo major changes in body forms.

A 2 A young frog that comes out of an egg and has gills to take in oxygen from water

D 3 The stage of complete metamorphosis in which an insect changes from a larva to an adult.

C 4 The stages between egg and pupa in complete metamorphosis in insects

A. Tadpole

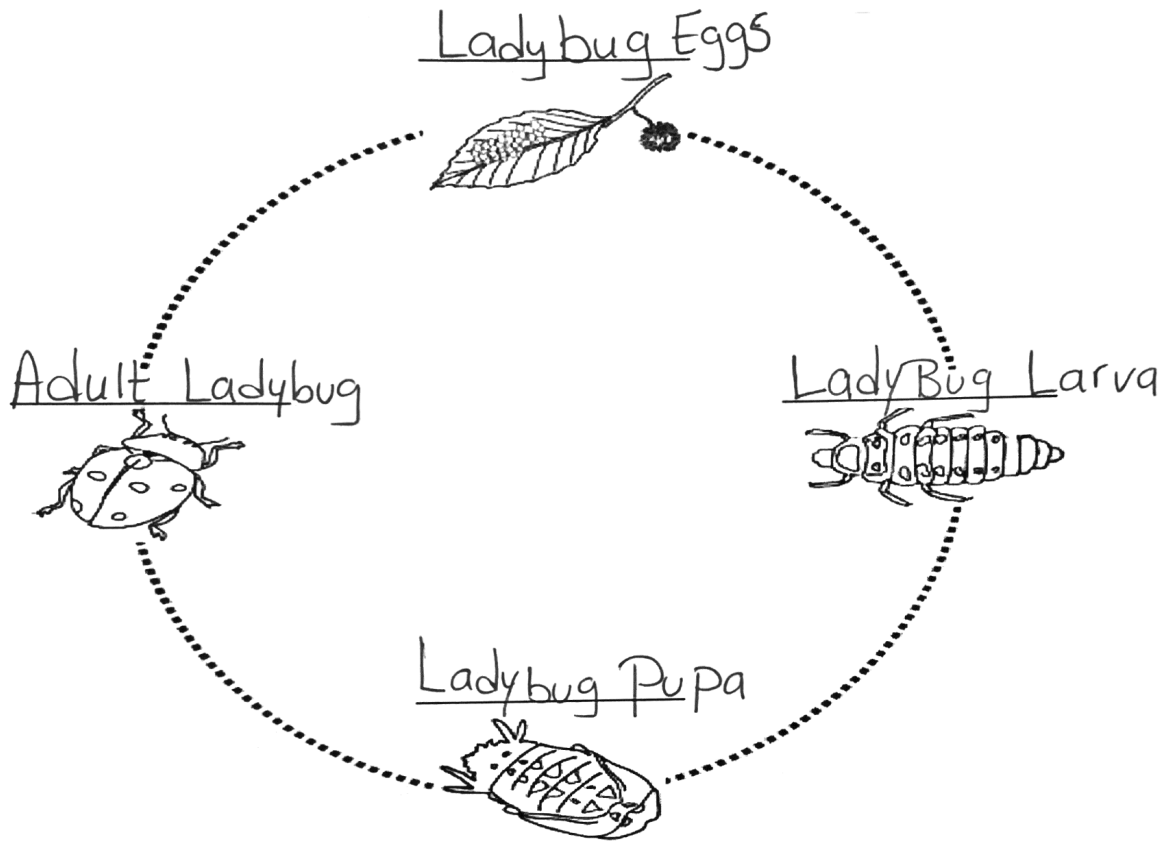
B. Metamorphosis

C. larva

D. pupa

C. label the diagram about the lady bug life cycle using the word bank below:

Ladybug larva - Ladybug Eggs - Adult ladybug - Ladybug Eggs



Review Question:

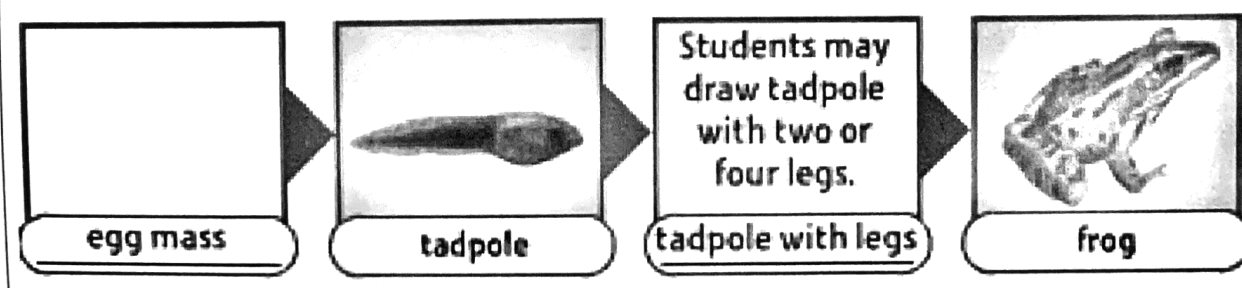
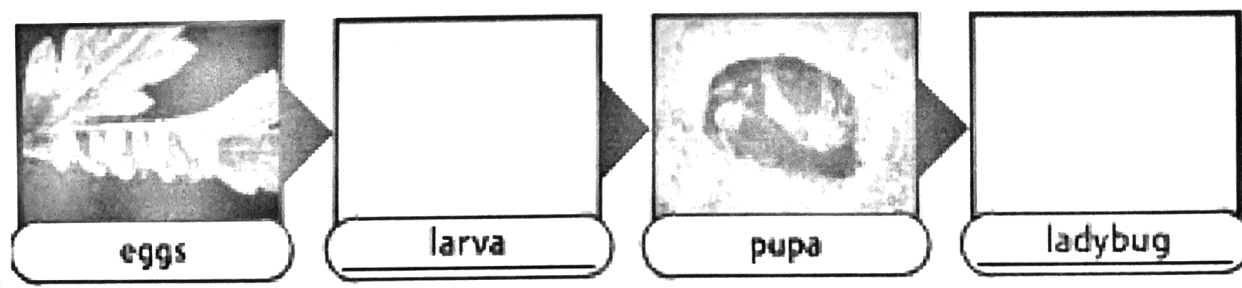
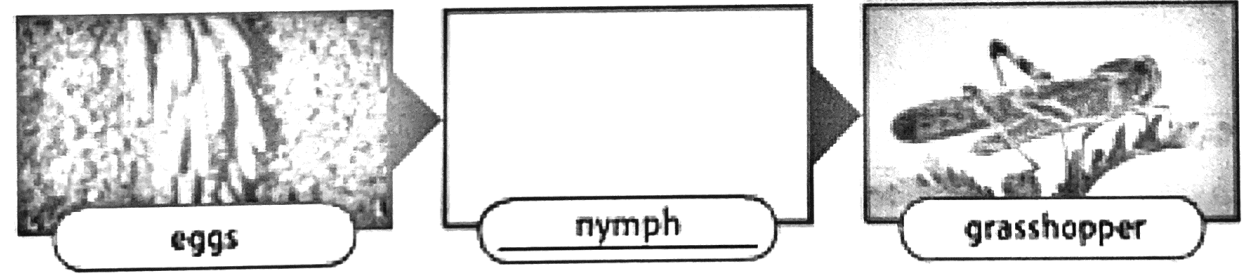
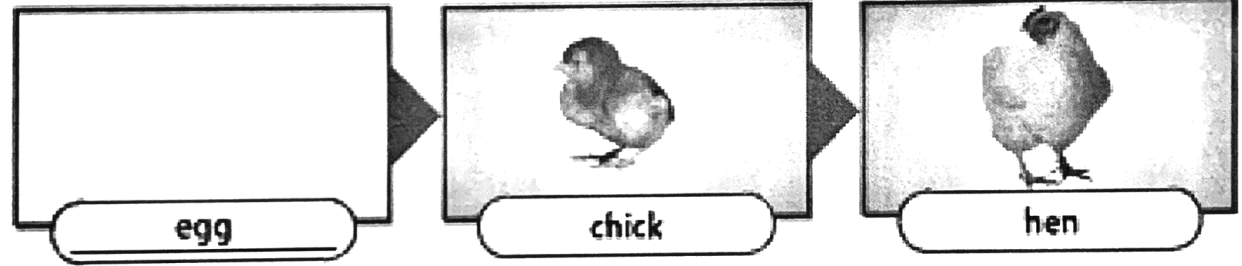
1. complete the following sentence

Seeds come in many shapes and sizes, when seeds are released from a plant they are carried away to new places by water, wind and animals

Name: _____ Date: _____
 Class: _____

1 Date: _____

Show the life cycle for each animal below. You may draw or write your answer in the boxes provided. Students' answers should reflect the correct life cycle of a chicken, grasshopper, ladybug, and frog.



Use the words in the box to complete the puzzle.

Across

- 4. A ladybug egg hatches and a larva comes out.
- 6. Through metamorphosis, a tadpole becomes an adult frog.
- 8. During complete metamorphosis, a larva becomes a pupa.
- 9. A life cycle includes many stages in an organism's life.

Down

- 1. After the pupa stage, a ladybug is an adult.
- 2. A tadpole is an immature form of a frog.
- 3. Most birds and reptiles reproduce by laying eggs.
- 5. Gills allow a tadpole to breathe under water.
- 7. Birds lay an egg as part of their life cycle.

